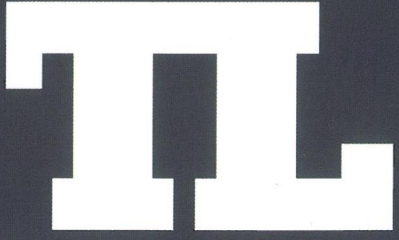


**TOTAL LIGHTING**

THE POWERFUL  
VOICE FOR  
THE LIGHTING  
INDUSTRY



# Follow the right light

OMS creates innovation history  
at Light+Building 2012

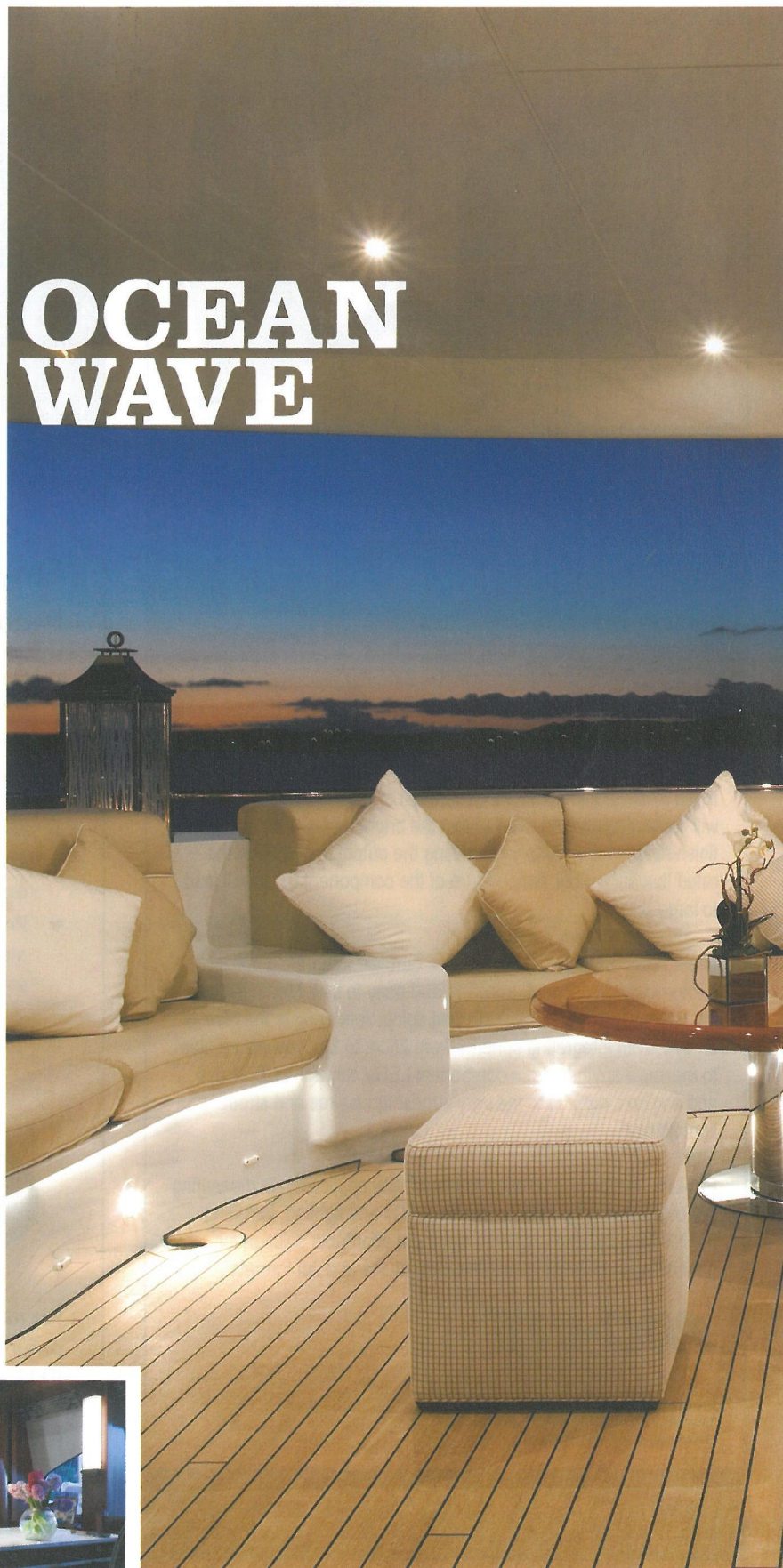
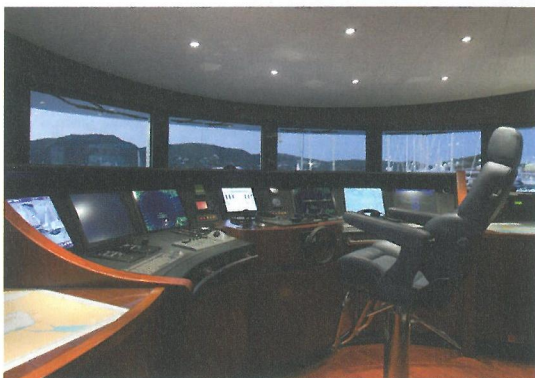
» NICK MAILER INTERVIEW » WHEN LIGHT BECOMES ART » SWITCHED ON TO CRUISING

LIGHTING QUALITY STANDARD  
DISCOVER A NEW ORDER OF LIGHTING WORLD  
[www.omslighting.com](http://www.omslighting.com)

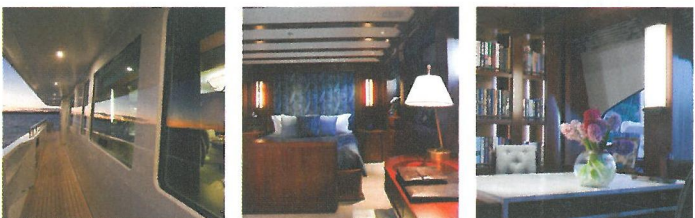
LQS



# A LIGHT ON THE OCEAN WAVE



As a nation, we Brits love a good cruise, and apparently, along with the rest of the West, we're queuing up to book our next fortnight on the high seas. Which is very good news for the luxury shipping industry, and of course, the designers and manufacturers who create those five-star interiors, including the specialist lighting element





o the uninitiated, lighting a cruise ship is surely no different to lighting any high-class hotel – or so you'd think if you've been taking any notice of the recent resurgence in interest in the doomed Titanic as we mark the 100th anniversary of its launch and subsequent sinking. Gas lamps and Tiffany glass shades were the order of the day, it appears.

In fact, the principles of lighting a cruise liner are all about power supplies and the quality of the fixtures specified. The market may be growing for these high-end vessels, but lighting them requires specialised knowledge of both the marine environment and maritime demands, so it's essentially a niche market.

Building on its experience lighting premium hotels, Chelsom has become a leading light in the the international cruise market, with an enviable list of clients including P&O, NCL, Royal Caribbean, Cunard, Fred Olsen, Carnival, SAGA, AIDA, Windstar and Disney.

#### NAUTICAL KNOW-HOW

Understanding the demands of the maritime industry is a vital element for any lighting manufacturer or designer who's considering moving into the cruise ship market, and Chelsom is skilled at adapting standard products to suit the seafaring environment.

Working with interior designers around the world, the team takes ideas from concept to completion, and with its in-house manufacturing facilities, can produce anything from a bespoke centrepiece for a main staircase or ballroom to a large production run of reading lamps for 1000 guest cabins.

Working alongside cruise specialists, McVitty Interior Consultants of London and Southampton-based Trimline, Chelsom was appointed to manufacture and supply bespoke cabin lighting across the Windstar fleet, which comprises the Wind Surf, Wind Spirit and Wind Star. Additionally, as part of the refurbishment, the company is creating public area lighting for the luxurious fleet.

The cabin lighting was designed with luxury in mind, enhancing the rich interior scheme created by McVitty. The bespoke combination wall brackets, which offer general bedside illumination, together with a directional flexi-arm LED reading light, have already been supplied for Wind Surf. The classic satin brass finish of the brackets is completed by silk pebble-coloured shades.

#### CONTINUING THE THEME

For the lounge area, the designers specified heavily ribbed blown glass table lamps in smoked grey with matching silk shades. For stability, the lamp bases were adapted so they could be securely fitted to the cabin furniture.

In the reception spaces, Chelsom is putting together prototype design proposals together with McVitty Interiors for large-scale central pendants. Will Chelsom, who heads up the company's cruise division comments: 'We are extremely happy with the lighting products we're supplying to the Windstar projects. In my opinion, McVitty and Trimline have created the most striking and luxurious-looking cruise ship cabins I have ever seen.

'I am so glad that Chelsom can claim to be a part of this superb trio of refurbishment projects!' ●●●

‘The yacht has been fitted throughout with a mix of LED’s, fibre optics and tungsten halogen lamps, all controlled by Lutron’s HomeWorks lighting control solution’

**SMALL BUT PERFECTLY FORMED**

When bespoke interiors specialist, Keech Green and award-winning Light and Design Associates brought their combined high-end residential design experience to play on their first ever super yacht project, the end results were stunning to say the least. In fact, the resulting Heesen yacht was picked up for this year’s World Super Yacht Awards.

The 49m, 499-ton, ocean-going vessel was designed by naval architect, designer, and founder of Omega Architects, Frank Laupman. Keech Green and Light and Design Associates were commissioned early on in the project. Their remit was to work closely with the owners to translate their design dreams into reality. From the outset, the owners wanted to create a sumptuous, yet flexible interior that could be transformed, using light, to suit any mood - from a cocktail party for eighty to an intimate dinner for two.

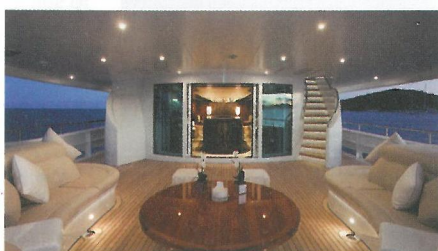
The yacht has been fitted throughout with a mix of LED’s, fibre optics and tungsten halogen lamps, all controlled by Lutron’s HomeWorks lighting control solution. The end result is a dramatic statement in light that can be altered to suit any mood.

**PRACTISE MAKES PERFECT**

Lee Prince, managing director of Light and Design Associates, explains further: ‘Lighting a super yacht was a fabulous first for me and my colleague, Torunn Saksvikronning. We wanted to bring our experience of lighting award-winning, high-end residential installations to this super yacht to create a signature look that other yachts of its calibre just don’t have.’

Some of the restrictions that Lee and Torunn encountered were ones not normally met in residential installations. Lee continues: ‘A key decision for choosing Lutron was that we wanted to ensure after-sales support for the technology from anywhere in the world that the yacht docked. With Lutron’s global reach, this made it the perfect choice.

‘Alongside meeting the owners’ design brief, we also had to take into account the limitations of energy consumption loads, so as not to overstress the yacht’s generators. In addition, the restricted ceiling voids and the weight of all the lamps, fixtures and controls had to be taken into consideration. This led to us using light with real creativity. The end result though is a highly integrated scheme



that offers the owners total control of a wide variety of lighting scenarios both inside and out, and there isn’t a MR16 downlight in sight!’

**STATEMENTS IN LIGHT**

An impressive four-storey spiral staircase clad in an innovative bronze liquid metal finish has been embedded with fibre optics. Four thousand 0.5mm strands have been fitted beneath the metal, so they can’t be seen or felt. However, once ‘party’ mode is selected on Lutron’s SeeTouch keypad, the fibre optics look like bubbles coming up through the embossed reeds on the metal.

A multi-layer lighting scheme has been combined with complex control programming in the master suite to create a versatile, yet dramatic environment. Fibre optics have been fitted into marine finish ceiling panels to a pre-prescribed star chart layout, which together with LED strips under the cabinets, can be altered to reflect a required ambience. In addition, LED’s have been creatively used in the master bathroom to fire narrow beams of light onto Lalique glazed doors, bringing out the beautiful patterns in the glass.

Other features include the open plan salon, the dining and cocktail bar areas and the impressive library and guest spaces. Using stunning alabaster lights and chandeliers as well as LED strips, shelf lighting and illuminated side glass panels, the interior lighting has been designed to include a high level of dimmable light sources to ensure any mood can be achieved. Even the colour temperature of the lighting has been chosen to draw out the warmth of the sumptuous Keech Green-designed marble, onyx, silk and cashmere interior.

Outside, the Jacuzzi, outer cocktail area, stern spiral staircase and the dive platform have all been lit for maximum impact. From the recessed LED’s in the Jacuzzi, to the underwater night-time swimming lights embedded in the hull below the dive platform, all can be controlled via a series of Lutron keypads throughout the yacht.

**SOPHISTICATED CONTROL**

Lutron’s HomeWorks software enabled the yacht’s lighting, AV and blinds to be linked with to ensure ultimate control from anywhere on board. By using Lutron’s Sivoia QED near-silent daylight control technology, it has been possible to programme the port and starboard blinds so that they can be altered individually. Not only does this ensure perfect interior light levels can be maintained wherever the sun is in the sky, but that privacy is possible wherever the yacht is docked.

Prince concludes: ‘The end result is a statement in luxury and functionality. The owner has a scheme that, thanks to Lutron’s HomeWorks system, can be altered to suit any mood. In addition, our focus on creating signature lighting pieces throughout the super yacht has led to a highly unique scheme that gives it a lighting identity that sets it apart from the competition’. **TL**



**Contacts**

Chelsom [www.chelsom.co.uk](http://www.chelsom.co.uk)  
Lutron [www.lutron.com/europe](http://www.lutron.com/europe)